

# Heart to Heart



BIANNUAL NEWSLETTER OF MARIA JOSEPH CONTINUING CARE COMMUNITY | ISSUE 7 | Winter 2023

## Sunset Wing for Hospice Care

For many years Maria Joseph Continuing Care Community has been known as the "Home with a Heart" --a welcoming, supportive community where smiles are contagious, caring is first nature, and neighbors quickly become friends. What better way to celebrate this value than to open a new Hospice unit in Emmanuel Center?

The idea sprang forth naturally as the Sisters of Saints Cyril and Methodius have a rich history caring for people during their last hours on this earth. For over fifteen years the Sisters partnered with Columbia-Montour Home Health and later Gesinger in a Hospice unit at Maria Hall. Many people in the Danville area and beyond received love and compassionate care in this program which was ended by Geisinger in 2021.

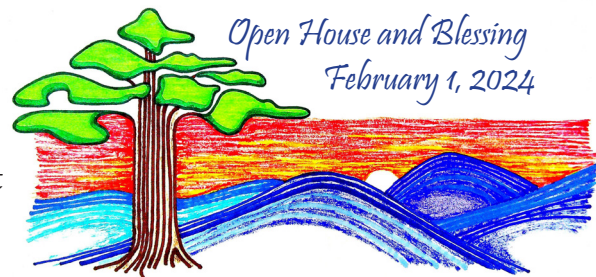
During the pandemic, the 300 unit at Emmanuel became the COVID wing, and it has not been utilized since. Ted Spotts, Executive Director of Maria Joseph Continuing Care Community said: "Staffing and financial implications prohibited us from reopening this unit. We discussed many scenarios regarding the best way to utilize this space, but one seemed to resonate the most." It seemed Hospice was a perfect next step. "I only saw one option for Unit 300 that aligned with the

Mission of Maria Joseph, and that was Hospice," explains Stacy Sheatler, Administrator at Emmanuel Center.

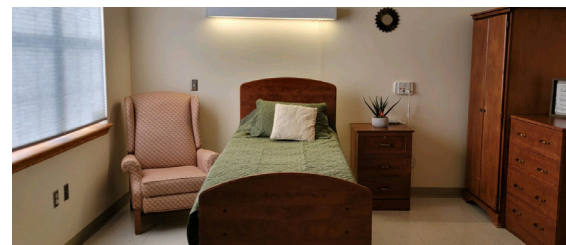
Unit 300 or the "Sunset Wing" as it will be referred to moving forward, will have eleven private rooms. Most rooms will be set up like a suite with a hospital bed and furniture to accommodate visitors and ensure a home-like comfortable environment. It is important that families and patients feel at peace and at home during this strenuous time.

Emmanuel will be able to accept referrals from any Hospice agency. "We didn't want to partner with one specific agency, because we really wanted to make sure we could serve as many people as possible," states Sheatler.

Sister Barbara Sable, General Superior of the Sisters of Saints Cyril and Methodius said, "Since our Congregation began in 1909, care for the elderly has been an important part of our Mission and Ministry. This Hospice unit is a perfect continuation of that long history."



*Those present on February 1 for the blessing of Sunset Lane followed Father Charles Ocul, AP, from room to room in sincere prayer that this new venture would be a great blessing for many.*





Home with the Heart  
Continuing Care Community  
A ministry of the Sisters of Saints Cyril and Methodius

1701 Montour Blvd, Danville, PA 17821  
(570) 275-4221 | [MariaJosephCCC.org](http://MariaJosephCCC.org)

Sister Barbara Sable, SS.C.M..... General Superior/President  
Ted Spotts..... Executive Director  
Sister Christopher Godlewski, SS.C.M..... Independent  
Living Administrator  
Melissa Narcavage..... Director of Nursing  
Jordan Klinger..... Personal Care Administrator  
Nicole Reichard..... Director of Human Resources  
Michael Heilman..... Interim Director of Facilities  
Stacy Sheatler..... Nursing Home Administrator  
Dawn Orzechowski..... Director of Mission Advancement  
and Marketing



**OUR MISSION:** Rooted in the Judeo-Christian tradition of hospitality and service and dedicated to a mission of love and respect for each individual, the Sisters of Saints Cyril and Methodius and the staff of Maria Joseph Continuing Care Community offer a welcoming and secure environment. Here, the lives of senior adults and their families are enhanced with compassion and professional care.

**The Meadows Independent Living**

77 Tower View Circle | Danville, PA 17821  
(570) 271-1000

**Nazareth Memory Center Personal Care**

15 Schoolhouse Rd | Danville, PA 17821  
(570) 275-8701

**The Manor Personal Care**

1707 Montour Blvd | Danville, PA 17821  
(570) 275-4221

**Emmanuel Center for Nursing & Rehabilitation**

11 Schoolhouse Rd | Danville, PA 17821  
(570) 275-6100



### How Would You Like to Be Remembered?

Everyone would like to be remembered after we leave this Earth. Remembered for our good deeds as well as our accomplishments. More importantly, we want to ensure that we leave this world better than we found it. How best to make sure this happens than to leave a Legacy Gift, better known as a Bequest? A Bequest to Maria Joseph Continuing Care Community will allow us to continue our ministry of providing loving, compassionate care to your neighbors even if they outlive their assets. It is important to note that this is one of the easiest ways to give back. Simply add language in your will or trust specifying a gift to be made to Maria Joseph Continuing Care Community. We can take care of the rest.

Please feel free to contact our Director of Mission Advancement, Dawn Orzechowski at (570) 271-1000 Ext. 1708 or [dorzechowski@mariajosephccc.org](mailto:dorzechowski@mariajosephccc.org) for questions or additional information.

### Heart to Heart

is published by Maria Joseph Continuing Care Community. Maria Joseph Continuing Care Community reserves the right to edit, revise or reject any materials submitted for publication. Maria Joseph Continuing Care Community is a 501 (c)(3) not-for-profit organization. The official registration and financials of Maria Joseph may be obtained from the Pennsylvania Department of State by calling toll free within Pennsylvania, 1-800-732-0999. Registration does not imply endorsement.

If you would like to make a donation-- scan this code:





*Sister Barbara Sable, SS.C.M.*  
General Superior of the Sisters of  
Saints Cyril and Methodius

## *Ubi Caritas-- Where There Is Love*

Often, when I seek out time in prayer, my mind gravitates to the simple and repetitive words of a favorite hymn, “*Ubi Caritas*.” The words of the song are in Latin, “*Ubi caritas, et amor, Deus ibi est*” and are translated as, “Where there is love and charity, God is there.” The simplicity of this song reminds me that God’s love is not complicated, either. Scripture assures us that “God is love” (1 Jn 4:8). The hymn also reminds us of Christ’s great love for us, and calls us to demonstrate love to others.

The song underlines the belief that God is present wherever love is shown. In this sense, these seven words are a summary of the Great Commandment found in the Gospels. “Love the Lord your God with all your heart and with all your soul and with all your mind and with all your strength...and love your neighbor as yourself.” (Mark 12:29-31, Matthew 22:36-40; Luke 10:27.) Theologian and writer Thomas Merton suggested, “God alone holds the secret of a charity by which we can love others not only as we love ourselves, but as God loves them. The beginning of this love is the will to let those we love be perfectly themselves.”

Reflecting God’s boundless love, the love that is demonstrated in our midst is limitless in variety. Have you practiced or seen love in action lately? Some of us have welcomed a stranger with a warm smile. Some have fervently prayed for peace in countries currently experiencing war. Some have cared for elderly and disabled loved ones. Love shines in the supportive and empathetic friend who quietly accompanies a grieving neighbor. Love is manifest in forgiveness and mercy. Love is shown daily in the care given by staff to our Maria Joseph Manor/Emmanuel/Nazareth/Meadows residents.

Let us allow the words of “*Ubi Caritas*” – “God is Love” guide us in our journey of seeking God in all things, great and small. Let us continue to both recognize God in the witnesses we see of everyday love, and to be that witness to others.

## *LOVE’s Compassionate Heart*

*Ted Spotts*  
Executive Director of  
Maria Joseph CCC



The values of Maria Joseph Continuing Care Community are Hospitality, Compassionate Care, Service, Respect, and Love. Of which love is the greatest, without love in our hearts – we cannot live the other four values to their fullest. The love of Christ is a giving love – a totally unselfish and selfless kind of love – the kind that only Christ can give; we are to be known by our self-giving, sacrificial, unconditional love for one another. The Sisters of Saints Cyril and Methodius are a Christ-centered community. They demonstrate their love through their service and commitment to others at Maria Joseph Continuing Care Community where we strive to follow the model of the Sisters by delivering the same type of selfless love to our residents, families and each other.

At Maria Joseph Continuing Care Community we offer individualized attention and care to our residents and families at every level of care. We offer emotional and spiritual support to our residents, families, and staff; physical care, life enriching programs and activities. When there is a need – we attempt to find a way to satisfy it by offering selfless, honest, safe, and hopeful love to all those charged to our care. We are blessed to have our model of Christ’s love in the Sisters of Saints Cyril and Methodius. During a time when other organizations have abandoned their missions, the Sisters are furthering theirs...and ours. Maria Joseph Continuing Care Community will continue to grow and flourish offering a hospice unit and cottage expansion in 2024. The Sisters provide that hopeful, loving, light of Christ to all of us as we strive to continue the mission at Maria Joseph. Serving others with a compassionate heart.....and LOVE.



## BIANNUAL NEWSLETTER OF MARIA JOSEPH CCC ISSUE 7 | Winter 2023

*Since our last publication, there have been activities galore at MJCCC. These photos can offer a quick glimpse of a fraction of them.*



## THE NEED CONTINUES FOR AN UPGRADE TO THE EMMANUEL FIRE PANEL

*Thank you to everyone who has donated thus far towards our necessary upgrade. We are so grateful for your support with this important project. At this point we have not raised enough to replace the system, so we continue to ask for assistance.*

Emmanuel Center opened its doors in 2001 and at that time included state-of-the-art fire and safety protection devices. Now, more than 20 years later, the facility is in need of an upgrade to the fire panel system. A fire panel system constantly monitors and provides immediate notification to the staff on site, the administration, and emergency personnel of a potential fire hazard and the location of that hazard. The fire panel also supports essential phone lines, and building entry and exit systems. This is especially important as a number of our residents have memory issues, and this system helps safeguard chronic wanderers. Although our current system is operational, it is becoming harder to obtain replacement parts. The upgrade is projected to cost \$170,000 and will come with the following improvements:

- An upgraded panel will increase our ability to utilize wander guard technology.
- The main panel will help to better control communication and technical issues that occur during an incident.
- The upgraded communication structure will report issues directly to the cell phones of our first responders as well as key staff members.

Please consider donating to this very necessary project. The safety of our residents is our utmost concern, and your kind and caring gift will help protect our residents.

*God bless you for your generosity and know that we will always hold you in prayer!*